

## Tees Rowing Club: Safeguarding, Guidance on Reporting a Concern

If you believe a child, young person or vulnerable adult is at **immediate** risk of harm, **contact the Police on 999.**

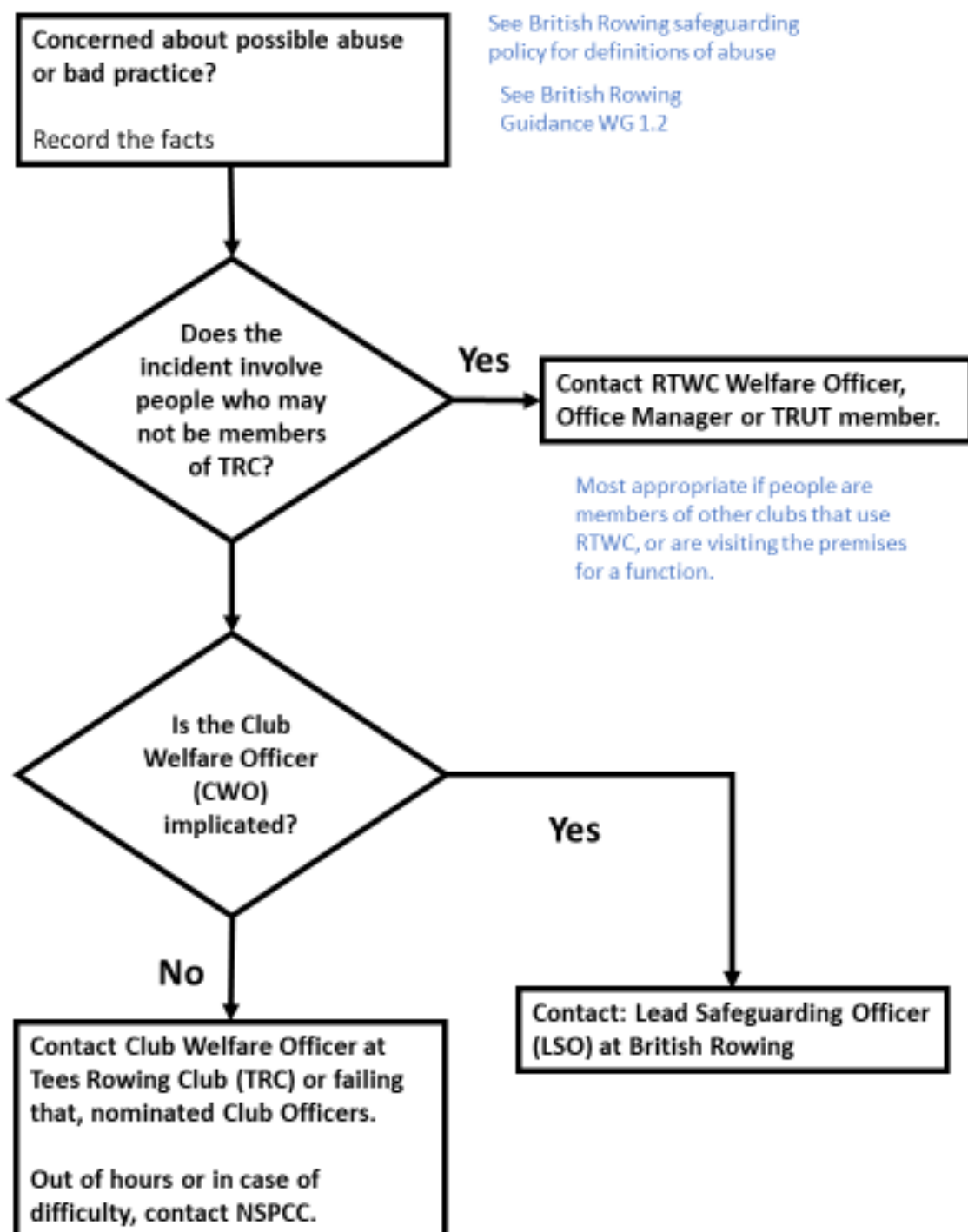
If immediate medical attention is required **call Ambulance on 999.**

On a mobile phone, you can dial 112; this will allow the Police to trace your location if you are out on the water for example.

If the concern arises because of anti-social behaviour and nuisance around RTWC or on the water, follow the Anti-Social Behaviour Guidelines and use the telephone numbers listed within these.

If the concern has arisen during an event e.g. Regatta, contact the Event Welfare Officer.

For all other concerns, follow this guidance.



Although most cases of abuse take place within the family setting, it can and does occur in rowing.

- It is essential that all allegations are taken seriously and appropriate action is taken.
- It is not your responsibility to decide if a child or vulnerable adult is being abused.
- It is your responsibility to report your concerns to the appropriate agencies.
- Not acting is not an option.

**If you are not sure and want to discuss something please contact the Club Welfare Officer, British Rowing's Lead Safeguarding Officer or a statutory agency for advice.**

**Remember:**

- The welfare of the child or vulnerable adult is paramount
- being vigilant helps to protect such people
- everyone has a duty of care to report any concerns they have immediately
- a good reporting structure ensures that concerns are dealt with fairly.

See British Rowing Safeguarding Policy for further information as well as their following guidance notes:

- WG 1.2 Report form for recording concerns and referrals
- WG 1.8 Advice and support for individuals receiving a concern or allegation
- WG 1.9 Advice and support for those who have reported concerns
- WG 1.11 Flowcharts for referral procedure within rowing
- WG 1.12 Flowchart for referral procedure outside rowing
- WG 1.14 Vulnerable Adults: How to record concerns of abuse
- WG 1.15 Dealing with allegations of bullying of Vulnerable Adults

**Revision date of this document: August 2019.**